



# Partnering to accelerate **Social Progress**

Building our indicators Wishlist

**SOCIAL  
PROGRESS  
IMPERATIVE**

# SIX GUIDING STEPS FOR SUCCESS

**Building the  
Concept**

**Building the  
Framework**

**Data  
Collection &  
Index  
Calculation**

**Validating  
Results**

**Communica  
ting Results  
& Building  
Initiative**

**Assessment  
& Impact**

## SIX GUIDING STEPS FOR SUCCESS

Building the  
Concept

Building the  
Framework

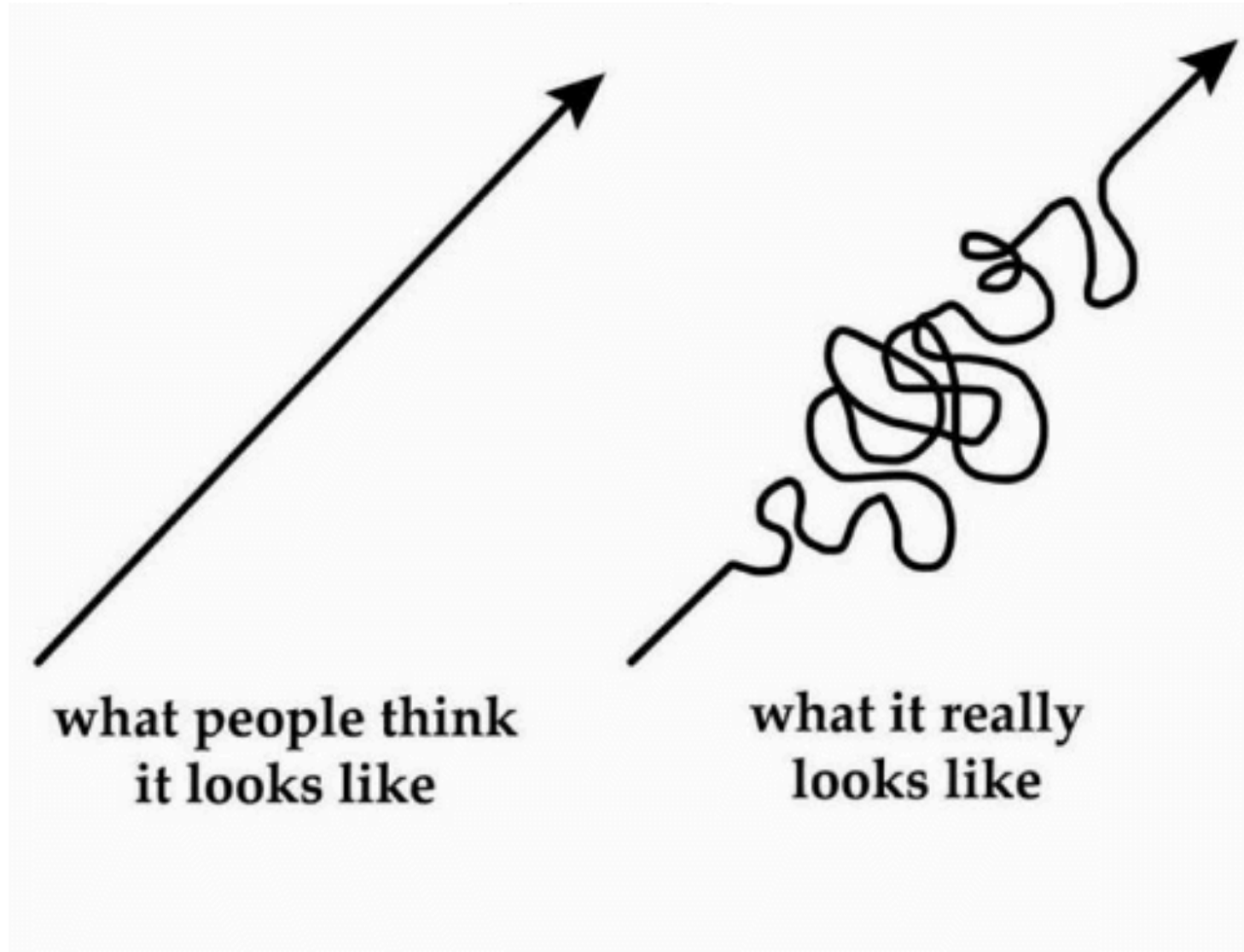
Data  
Collection &  
Index  
Calculation

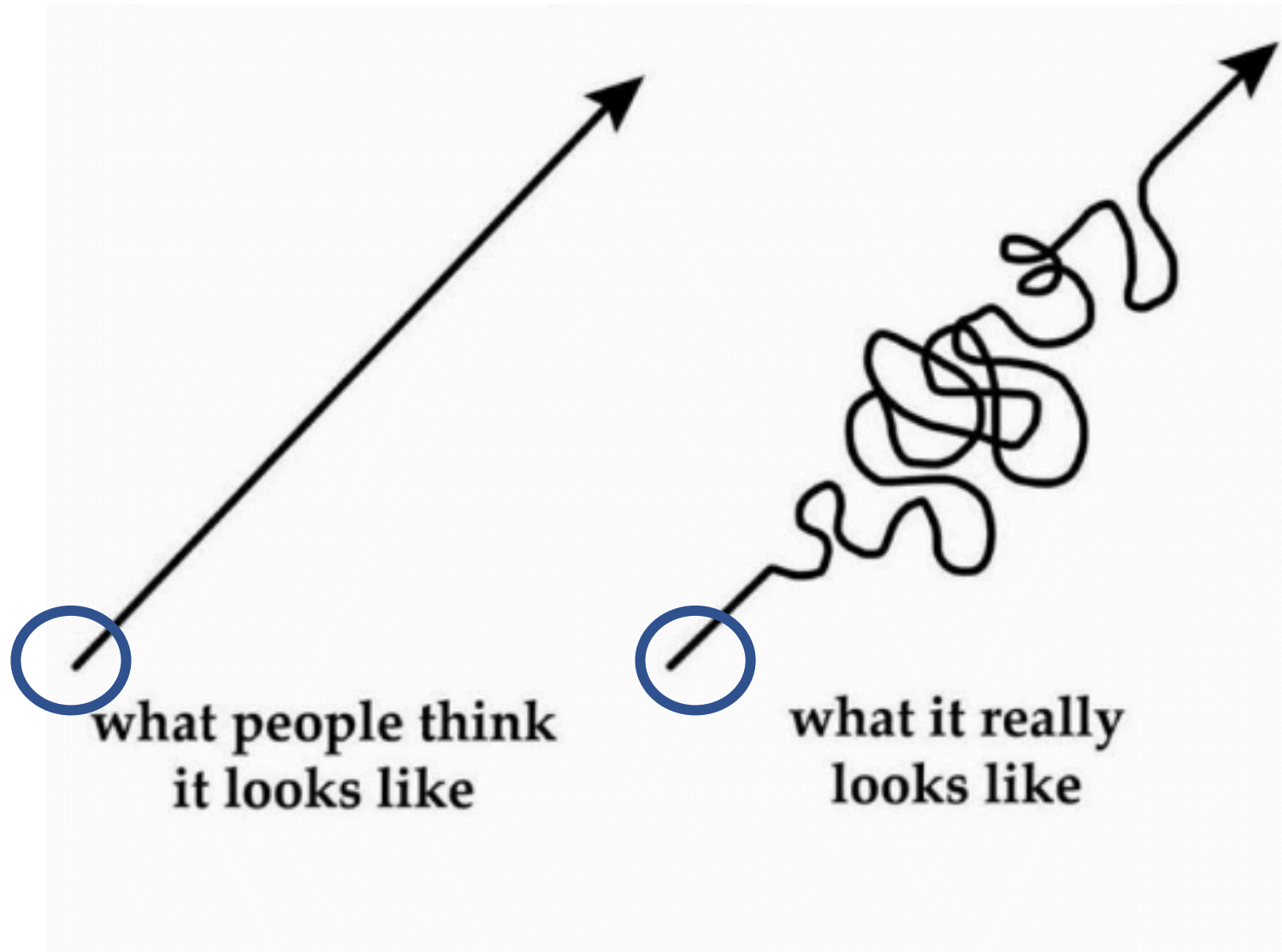
Validating  
Results

Communica  
ting Results  
& Building  
Initiative

Assessment  
& Impact

# The process of creating a Social Progress Index

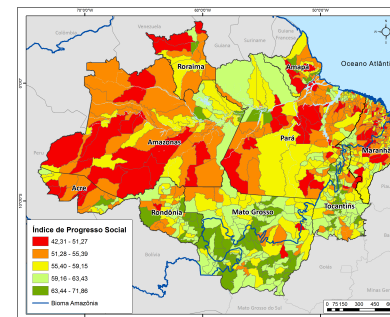
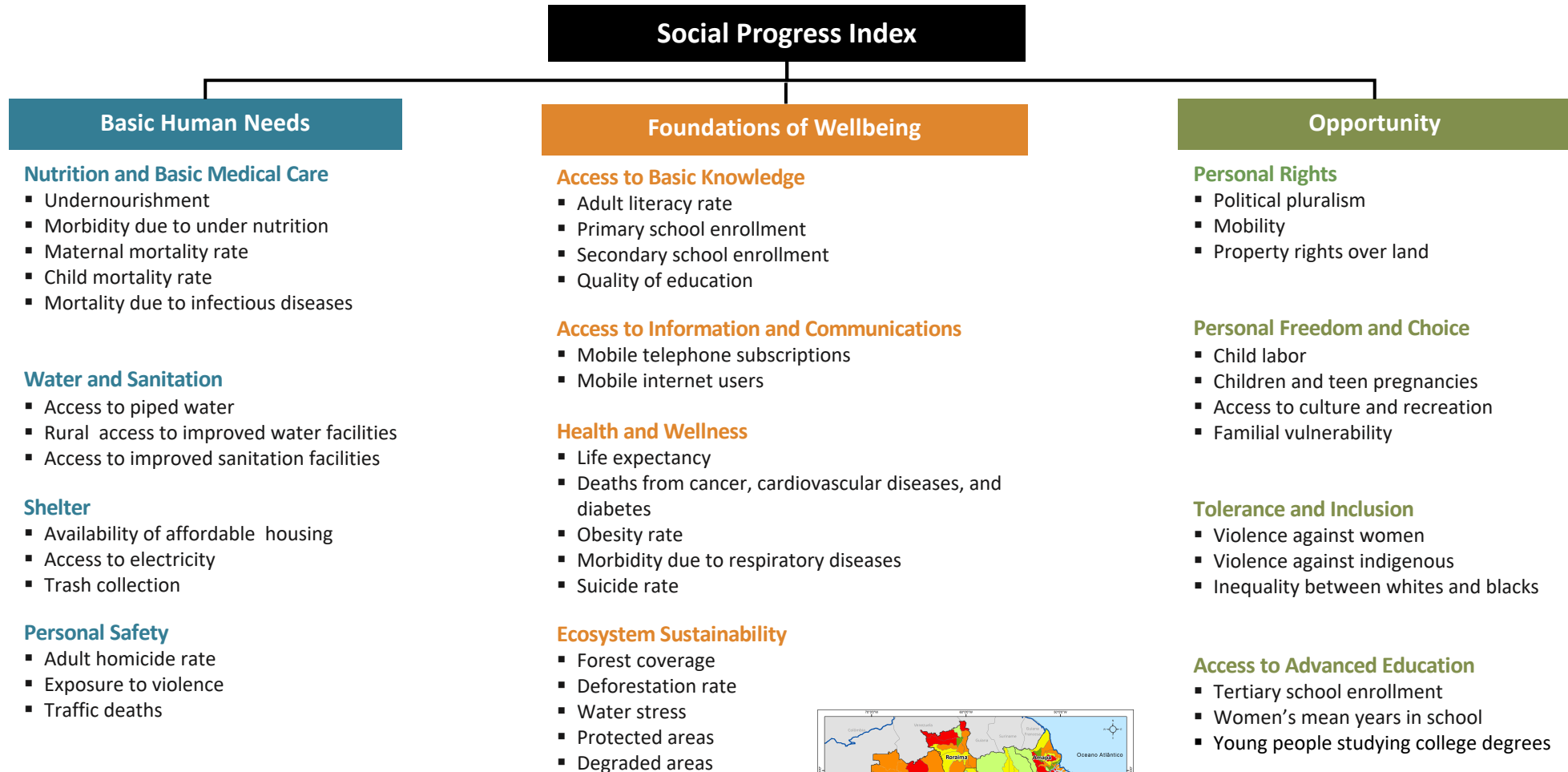




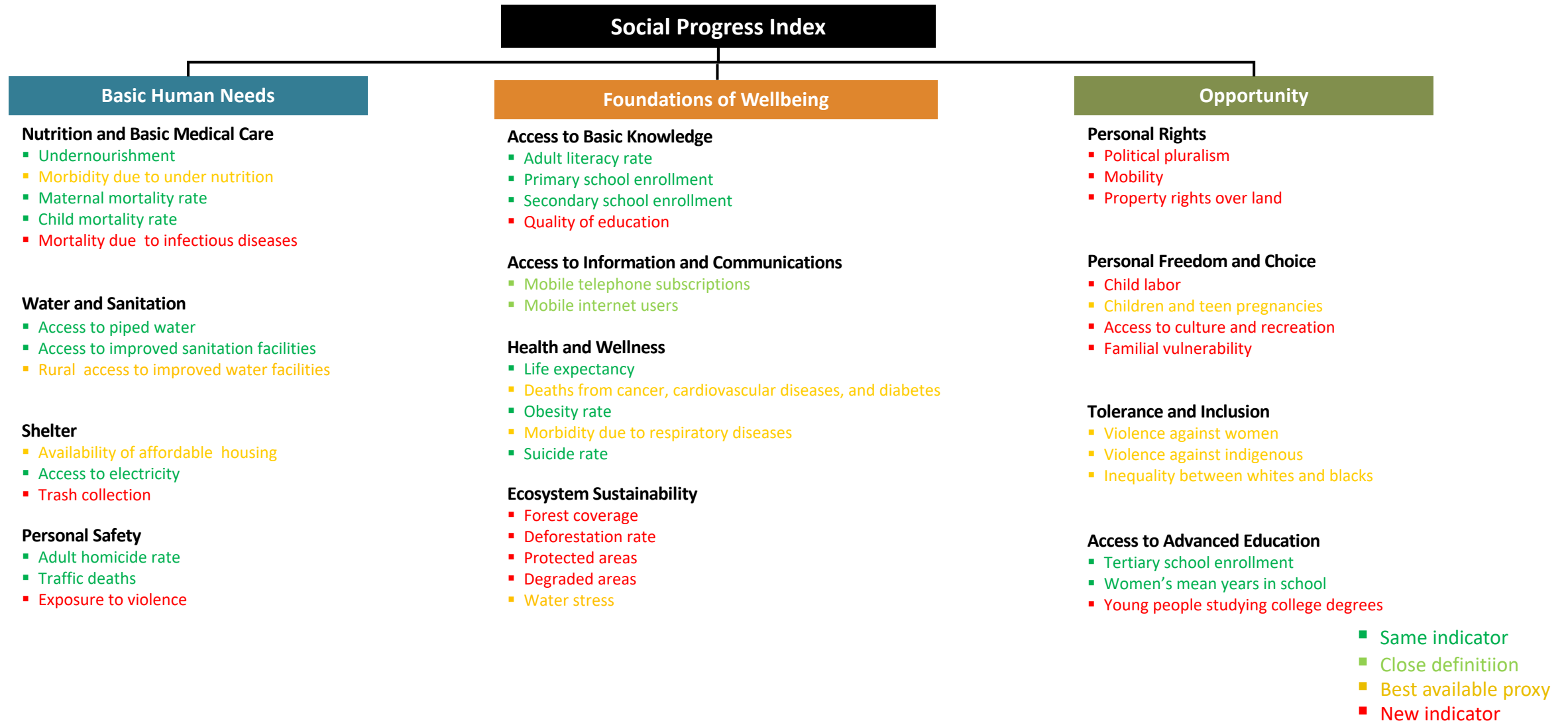
# Objectives of today 's session

- Identify potential indicators and data sources of the Social Progress Index of the Provinces of Thailand.
- Gather different points of view and perspectives on social progress and sustainable development applied to the Thai context.
- Present the first (of many) versions of the Framework for the index

# Municipal Framework for SPI Amazônia



# INDICATORS COLOR-CODED BY LEVEL OF MATCHING WITH THE GLOBAL FRAMEWORK








# Unique design principles

The Social Progress Index design principles allows an exclusive analysis of social progress.

1.  exclusively **social**  
 and  
 **environmental**  
 indicators

2. **outcomes**  
   
not inputs 

3. relevant to **all countries**  


4. **actionability**  


**Social and environmental indicators only** Measures social progress exclusively and directly, independent of economic indicators.

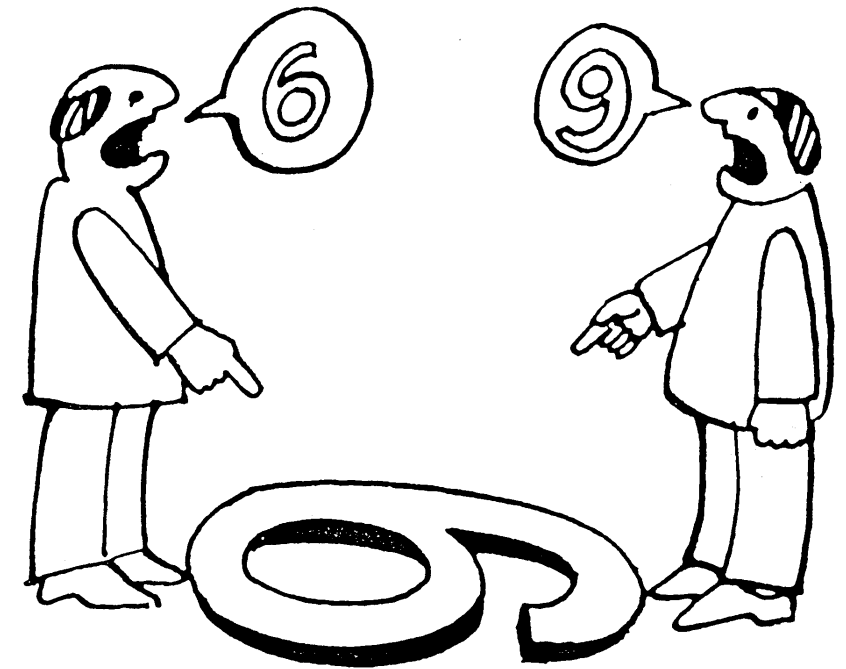
**Outcomes, not inputs** Measures outcomes or lived experience, regardless of effort spent.

**Holistic and relevant to all communities** Multidimensional measure that encompasses the many inter-related aspects of thriving societies everywhere.

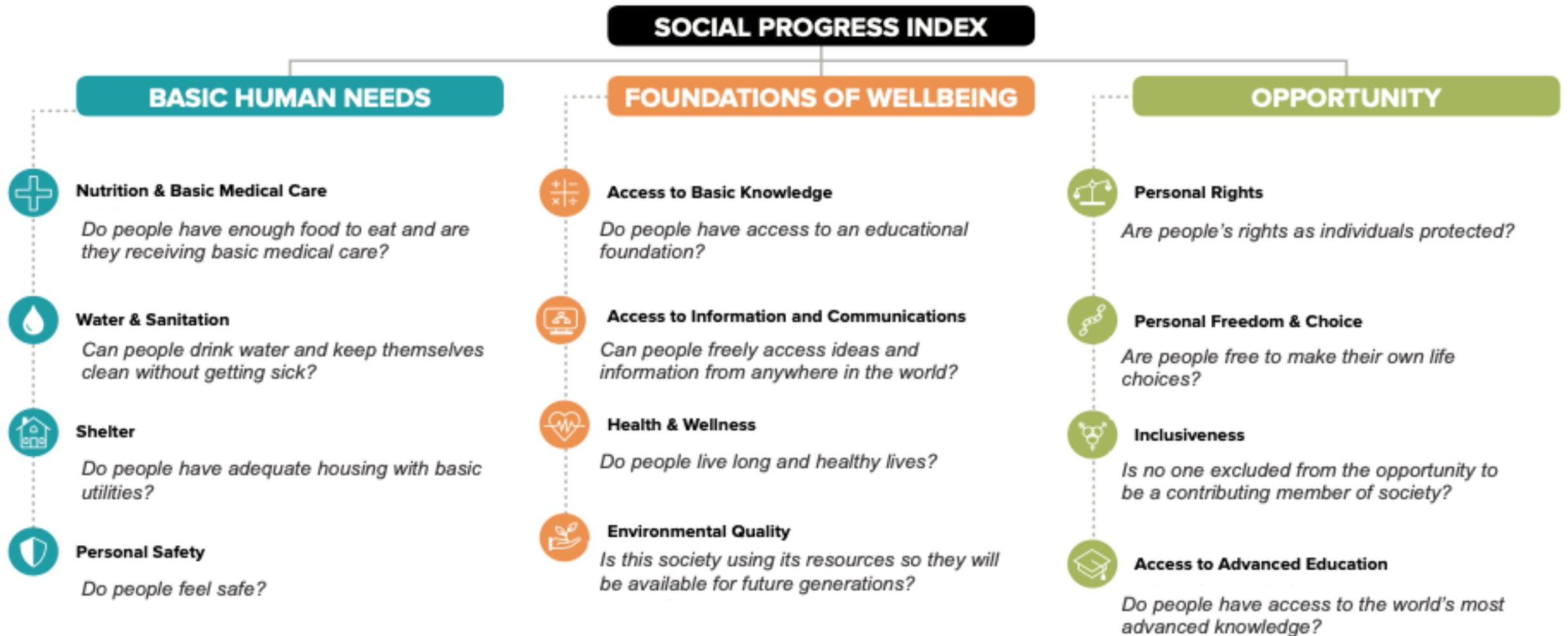
**Actionability** Practical tool that helps leaders and decision-makers implement policies and programs to drive faster social progress.

# Some rules

- Please make sure you add the name of the indicator and/or the spirit behind it.
- If possible, please add the potential data source into the column.
- Add some value from your own perspective.
- No right or wrong answers – now is the time to be creative.
- Make sure you use a different font color than the previous group.
- Be mindful about the time.
- At the end of each collaborative session, please choose a presenter to show your work to the class.

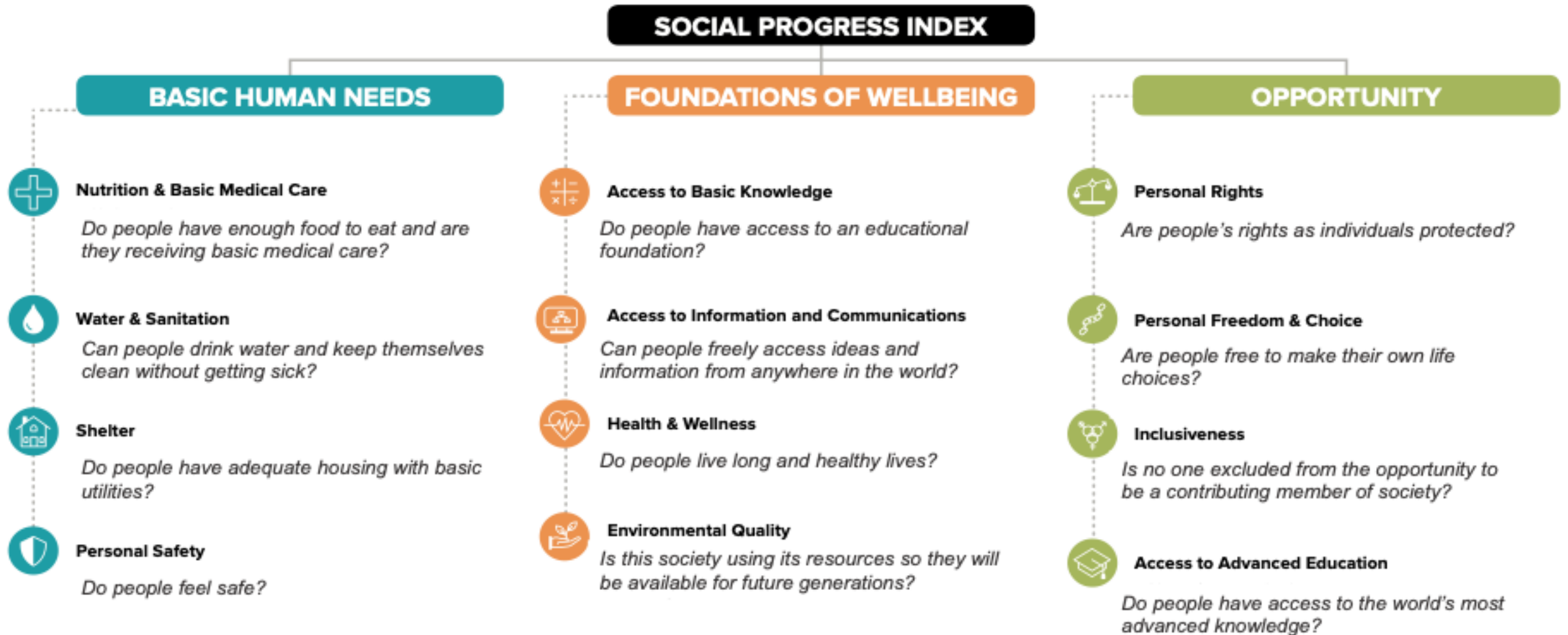


# Keep the guiding questions front of mind during the exercise



- 10 MINUTES ON your first component
- 5 minutes to provide feedback in the remaining components of the dimension.
- Please use a different font color from the previous group.
- [Click here to open the spreadsheet.](#)

# Keep the guiding questions front of mind during the exercise



## BASIC HUMAN NEEDS



### **Nutrition & Basic Medical Care**

*Do people have enough food to eat and are they receiving basic medical care?*



### **Water & Sanitation**

*Can people drink water and keep themselves clean without getting sick?*



### **Shelter**

*Do people have adequate housing with basic utilities?*



### **Personal Safety**

*Do people feel safe?*



### **Nutrition & Basic Medical Care**

*Do people have enough food to eat and are they receiving basic medical care?*

# Foundations of Wellbeing



# Foundations of Wellbeing



Group 1

Group 2



# Foundations of Wellbeing



Group 1 Metawe

Group 2 Vasu

# Foundations of Wellbeing



Group 2

Group 1

# Foundations of Wellbeing



Group 2

Group 1

# Foundations of Wellbeing



# Opportunity



# Opportunity



Group 1 Metawe

Group 2 Vasu

Group 3 Prapassorn

Group 4 Rafael

# Opportunity



Group 4 Rafael

Group 1 Metawe

Group 2 Vasu

Group 3 Prapassorn

# Opportunity



Group 3 Prapassorn

Group 4 Rafael

Group 1 Metawe

Group 2 Vasu



# Opportunity



Group 2 Vasu

Group 3 Prapassorn

Group 4 Rafael

Group 1 Metawe

Keep the guiding questions front of mind during the exercise

